

Ski Trip 1 to Italy

WEEK 2

WEEKLY

19.02.24



On Saturday 20th January we took 30 students on our annual ski trip to Claviere in Italy. Below is one of the diary entries from the week. An update on Ski trip 2 to follow next week!

Tuesday's Diary

We woke up to beautiful sunshine this morning in Claviere. The beginners group were excited to be heading up the mountain again. Today we went up on the second ski lift, so further than we had been before. We were very eager and a little apprehensive to be going down our first red run, but with a few falls and lots of smiles we made it all the way down to the bottom. The group are really bonding together, making new friendships and looking out for each other.

The beginners today have made loads of progress making it up to the second lift again this afternoon. All of the students have been practicing perfecting their snow plough with good control resulting in some great turns. Amazing to think a few days ago they hadn't put skis on before and now they are on blue runs and trying parts of red runs. Great determination from a great group.

Mrs McCaul spent the morning with the intermediate group who travelled higher and further than before. The slopes were longer, more difficult and the adrenaline was pumping. Mrs McCaul was very impressed with all the group who conquered some really challenging runs. A really rewarding and satisfying day was had. Looking forward to what new runs tomorrow will bring.

Mr Higgs spent the day skiing with the advanced group and was super excited with eager anticipation to hit the slopes with the A-Team. The weather was beautiful, clear blue skies and moderate warm sunshine which meant that the conditions under the skis could be slightly challenging in the afternoon, with the fresh snow turning to ice. Despite this, the whole group skied exceptionally well. Our instructor Alby, commented on how fantastic the group were doing. Alby stated that 'he wanted to focus on developing their technique for the next two or three days, as the whole group showed exceptional natural ability', and if they all could master the skills Alby was teaching them, they would go on to be excellent skiers should they continue to ski in the future.



winchmore_secondary_school

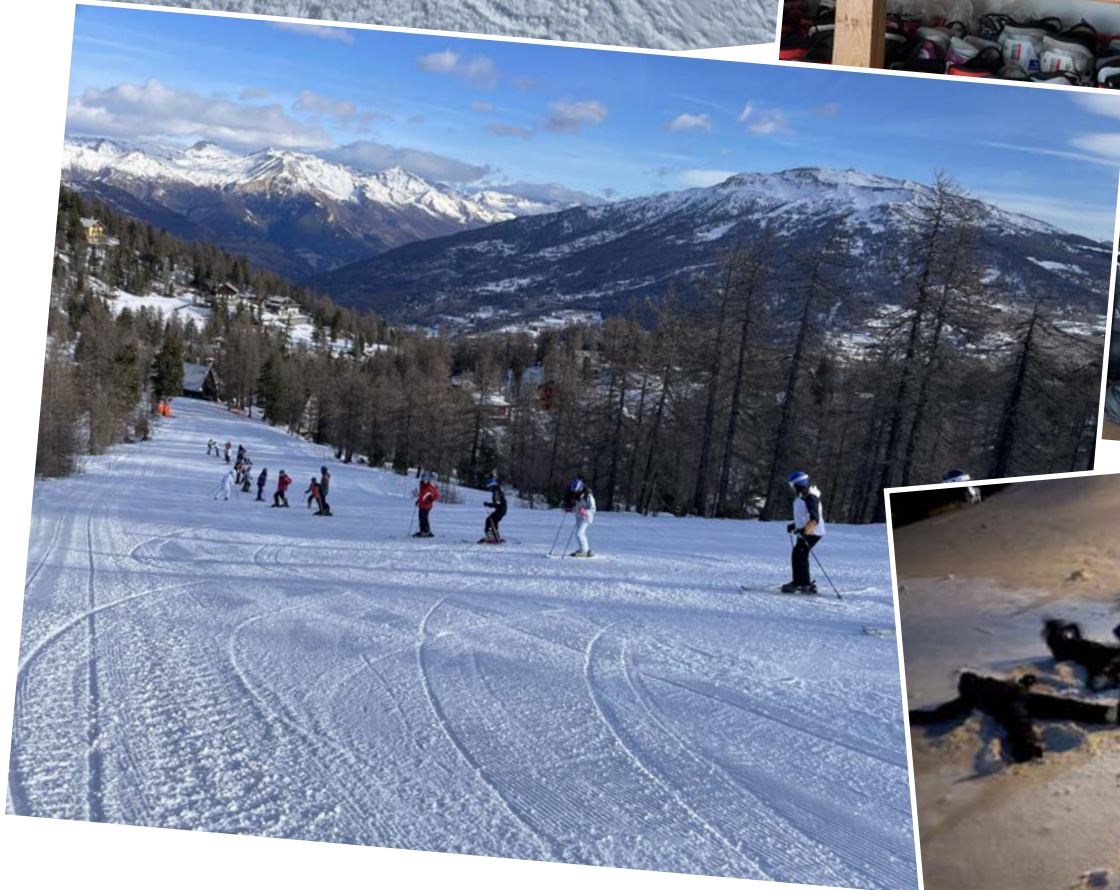
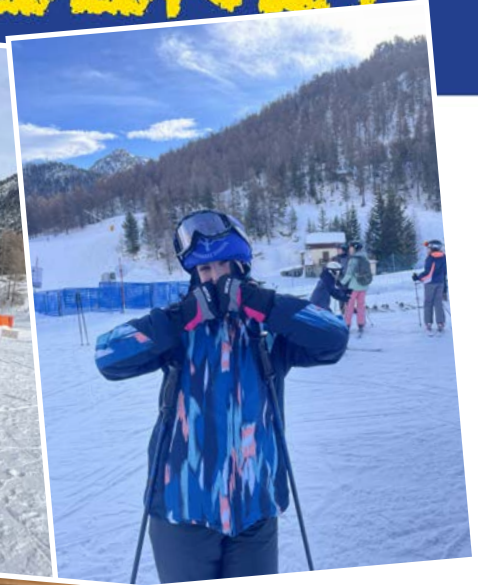


@thisiswinchmore



@winchmoreschool

WINCHMORE WEEKLY



Year 10 GCSE Drama Workshop



Year 10 GCSE Drama students had a full day workshop with Box House Theatre Company on Thursday 8th February. Throughout the day they explored three different styles of theatre. These included Naturalism, Abstract and Platform Theatre. These offered students a range of opportunities to consider the way in which they create and present ideas for an audience. We have just started the Component 1, Devising Unit which is worth 40% of the overall Drama GCSE. The work created in the workshop will be used to develop the exam pieces and will undoubtedly enhance the quality.

One student said: 'Not only was the day very educational, but it was also fun and I enjoyed the physical elements of each workshop'.

The practitioners were very complimentary of our students and said 'they made really mature, creative, theatrical choices and let go of their inhibitions to create really interesting drama.'



School Premises for Hire

Are you part of a local community group?

Do you run an after school or evening club or activity?

Did you know our school premises are available for hire Monday to Saturday at competitive prices. We would love to hear from you via our lettings agent School Hire & Functions Limited.

Email: school.hire@yahoo.co.uk Phone: 07855 042027 Web: www.school-hire.com



WHAT COULD HAPPEN IF I KEEP MY CHILD FROM SCHOOL FOR AN UNAUTHORISED REASON?

Local authorities and schools can use various legal powers if your child is missing school without a good reason. Consequences of continued absence are:

- a Parenting Order
- an Education Supervision Order
- a School Attendance Order
- a fine (sometimes known as a 'penalty notice')

⚠ WARNING ⚠

You can be given one or more of these but the council does not have to do this before prosecuting you.



ATTENDANCE MATTERS!
Every Student, Every School, Every Day

Good attendance at school is the single most important factor in ensuring that children and young people have the best opportunities in adult life.

How parents/carers can help their child have good attendance?

- From starting at nursery, make sure your child arrives at school on time, every day.
- Encourage your child to take part in school activities and ensure that they understand the importance of being there every day.
- Don't let your child take time off school for minor ailments – particularly those which would not stop you from going to work.
- Where possible, make appointments after school, at weekends or during school holidays.
- Remember, a morning appointment does not mean a whole day of absence. Bring your child back to school in the afternoon.
- Take family holidays during school holiday time only. Schools publish term time dates well in advance – use these to plan your family holiday.
- Encourage your child to tell you about any problems they may have at school. If you know or think that your child is having difficulties attending school you should contact the school straight away.
- Find out regularly your child's attendance and absence record and check that this matches with your own records.
- Acknowledge, praise and reward good or improved attendance, even small successes.

WHAT EACH SANCTION MEANS

Parenting Order

A parenting order is a sanction that is decided and issued by the Magistrates court (if the local authority instigates court proceedings). This means you have to go to parenting classes. You'll also have to do what the court says to improve your child's school attendance.

Education Supervision Order

If the local authority thinks you need support getting your child to go to school but you're not co-operating, they can apply to a court for an Education Supervision Order.

A supervisor will be appointed to help you get your child into education. The local authority can do this instead of prosecuting you, or as well as.

School Attendance Order*

You'll get a School Attendance Order if the local authority thinks your child is not getting an education.

You have 15 days to provide evidence that you've registered your child with the school listed in the order or that you're giving them [home education](#). If you do not, you could be prosecuted or given a fine.

**This is a legal proceeding instigated by the local authority and referred to the Magistrates court for their consideration.*

Penalty Notices

Your local authority can give each parent a fine of £60 per child (issued on behalf of schools), which rises to £120 per child if you do not pay within 21 days. If you do not pay the fine after 28 days you may be prosecuted for your child/ren's absence from school.

Prosecution

You could get a court fine of up to £2,500, a community order or a jail sentence up to 3 months. The court also gives you a Parenting Order.

IMPROVING SCHOOL ATTENDANCE

YOUR ROLE AS A PARENT/CARER



www.enfield.gov.uk

ENFIELD
Council



There are 365 days in a calendar year and 175 of them are non-school days! That's plenty of time to book appointments, holidays and lots of quality family time together!

Below 90%

Serious impact on education and reduces life chances

90-95%

Less chance of success

96% & above

Best chance of success



But it's only a day

- ▶ 90% attendance = half day missed every week!
- ▶ One school year at 90% attendance = four weeks of learning missed!
- ▶ Over 5 years of school = half school year missed!

All children and young people whose school attendance is 90% or below are considered to be persistent absentees.



THE IMPACT OF SCHOOL ABSENCE

- The pupils with the highest attainment at the end of Key Stage 2 and Key Stage 4 have higher rates of attendance compared to those with the lowest attainment.
- At Key Stage 4 the overall absence rate of pupils not achieving grades 9-4 was over twice as high as those achieving grade 9-5 (8.8% absence compared to 3.7% absence).

Taken from 'Working Together to Improve School Attendance', September 2022

WINCHMORE WEEKLY

Monday
19th February

- **Geography Year 12 A Level Field trip all week to Nettlecombe in Somerset**

LUNCHTIME ACTIVITIES:

- **KS3 and KS4 Careers Drop in** - Careers Office

AFTER SCHOOL ACTIVITIES:

- **After School Club** - Library 3pm to 4pm
- **Music Tech Club** 3-4pm in M2
- **Art and Photography Club** 3.15-4.15pm in A1
- **The Entrepreneurs Club** 3.15-4.15 in room 31
- **Year 11 Geography and Sociology Boost sessions** for invited students (3pm)
- **Year 11 Drama Intervention** 3.00 -3.45pm in room 30
- **SEND Scrabble club** (Specific students - Y10 & Y9)
- **MIDDLESEX Cup fixture** - Year 7&8 vs Latymer
- **Coding Club (KS3)** 3:00-4:00 Room 03

- **School Travel Champion Award trip to 'The Living Rainforest' Year 8**

LUNCHTIME ACTIVITIES:

- **Apprenticeship Careers Drop in** (Any Year group) - Careers Office
- **Lego Club** - Years 7&8 - Wellbeing Room 1.15-2pm
- **Music rehearsal time**

AFTER SCHOOL ACTIVITIES:

- **After School Club** Library 3pm to 4pm
- **Girls Football Club** - Years 7&8 - 3:10-4.15pm Bring indoor and outdoor footwear.
- **Boys Football Club** - Year 9 - 3.00-4.30pm
- **Fitness (Resistance Training)** - Years 9-13 only - 3-4pm in the Fitness Suite
- **Basketball** 3:15-4:15pm
- **IMedia Boost classes** - Targeted Year 10 and year 11 students 3-3.45pm
- **Year 11 Music, Computing, NCFE Business, Geography and Sociology Boost sessions** for invited students (3pm)
- **SEND (study skills - English & Science) after school club** - Year 10-9 specific students 3:15 - 4:15
- **Year 11 Music Boost sessions** for invited students 3pm to 4pm
- **Netball SENIORS vs Oasis Hadley and YEAR 8's vs St Johns**

- **Drama theatre trip to 'Metamorphosis'**
- **Health & Social Care theatre trip to 'Everyone is talking about Jamie'**

LUNCHTIME ACTIVITIES:

- **KS5 Careers Drop In** - Careers Office
- **Music rehearsal time**

AFTER SCHOOL ACTIVITIES

- **After School Club Library** 3pm to 4pm
- **Year 11 Health and Social Care Boost sessions** for invited students(3pm)

Tuesday
20th February

Wednesday
21st February

WINCHMORE WEEKLY

LUNCHTIME ACTIVITIES:

- Individual silent study and silent reading in the Library
- Drama Club - Years 7-9 in DR1
- Christian Club - All welcome. In Room 23. 1.20-1.50pm
- Music rehearsal time

AFTER SCHOOL ACTIVITIES:

- After School Club Library 3pm to 4pm
- Fitness (Resistance Training) - Years 9-13 only - 3-4pm in the Fitness Suite
- Basketball - Years 10-13 - 3:15-4:15pm
- Boys Football Club - Year 7 - 3-4pm
- Boys Football Club - Year 9 - 3:00pm- 4:30pm
- Guitar Club - All Pupils - 3-4pm in M1
- French, Spanish, iMedia, NCFE Business & NCFE Health & Fitness Boost Classes - Targeted Y11 students 3-3:45pm
- Year 11 Science Boost sessions for all students via Google Meet at 4:45pm
- Year 9 Music Boost sessions for all pupils 3pm to 4pm
- Year 9 History Boost sessions for invited students 3pm to 4pm

Thursday
22nd February

AFTER SCHOOL ACTIVITIES:

- Table Top Gaming Club - All Years - 3-4.15pm in room 68
- Dance Club - Years 7-9 - 3:15-4:15pm in Dance 2
- Art, Drama, Computing, Geography, Media Studies, GCSE PE and Sociology Boost Classes - Targeted Year 11 students 3-3:45pm
- Computing Boost classes - Targeted Year 10 students 3-3:45pm
- KS5 Physics club - Y12, Y13 - 3-4pm in SC4

- A Level Geography field trip returns

Friday
23rd February

TWO EQUAL TOTALS

MATHS CHALLENGE #1

- NINE CARDS, NUMBERED WITH THE INTEGERS FROM 1 TO 9, ARE SPLIT AT RANDOM INTO THREE PILES OF THREE CARDS EACH. THE TOTAL OF THE CARD NUMBERS IN EACH PILE IS CALCULATED.
- WHAT IS THE PROBABILITY THAT EXACTLY TWO OF THE PILES HAVE THE SAME TOTAL?
- SUBMIT YOUR SOLUTION
PLEASE DO SEND IN YOUR SOLUTION TO THIS PROBLEM TO
SULEYMAN.ALI@WINCHMORE.ENFIELD.SCH.UK. YOU CAN SCAN OR PHOTOGRAPH YOUR WRITTEN WORK, OR TYPE YOUR SOLUTIONS. IF THIS IS YOUR FIRST WEEKLY MATHS CHALLENGE SOLUTION, PLEASE INCLUDE YOUR YEAR GROUP AND FORM

**BritishRedCross****The power
of kindness**

This is to recognise the wonderful achievement of

Winchmore School

for raising £302.23 for the British Red Cross
Israel and Occupied Palestinian Territory Appeal

This valued donation will provide practical, medical
and emotional care to people in crisis

Your kindness will help to save lives
and will bring happiness to many



CERTIFICATE OF ACHIEVEMENT

Presented by the Sickle Cell Society to

Winchmore School

**For your amazing fundraising efforts for
the Sickle Cell Society during 2023.**

JOHN JAMES OBE
Chief Executive



**SICKLE
CELL
SOCIETY**

Winchmore School Science Student Interface

Winchmore School Science Student Interface

Sign In - Use Your School Email Id & Password to Access all Contents

Click - Student guide on how to access the Resources on Science Student Interface

Great News - Biggest Update - Year 7, 8, 9, 10 & 11 Math Study Courses are Available - (Don't Delay Start Learning, Practice & Revising -) Test your Knowledge & Achieve Excellent grades! No Exams.

Let's
learn

Science Student Interface

*Complete Course of
Year 7, 8, 9, 10 & 11
is Now Ready.*



**Start
Learning**

**Start
Practicing**

**Start
Revising**

*Section 1 - Read,
Learn & Practice -*



*Section 2 - Test
Your Knowledge-*

Section 3 - Revision

**AQA
SPEC**

Self Study @ Home

Lots of Resources, enough to get A*

**PAST
PAPERS**

**GOOGLE SLIDES & TASK, WATCH VIDEO,
LISTEN TO PODCAST, EXAM STYLE QUESTIONS, TEXTBOOK
PAGES WITH ANSWERS, REVISION,
COMMAND WORDS, CHECKLIST, KEYWORDS & MUCH MORE**

Link : bit.ly/WS3I OR Winchmore
School Website -> Quick Links

WINCHMORE
SCHOOL

CODING CLUB

MISS
ASKIN

MONDAYS
3:00-4:00

LOCATION
ROOM 03

COME AND LEARN VARIOUS CODING SKILLS.
INCLUDING PYTHON, MICROBITS, WEBSITE DEVELOPMENT AND MORE!