

WEEKLY

WINCHMORE



New Sixth Form Building Progress

Here are some pictures of how the building work for our new Sixth Form building is progressing, and an artist's impression of the foyer. The new Sixth Form building at Winchmore will provide much needed additional space for Sixth Form students, some of whom currently have to travel between two sites.



03.06.24



[winchmore_secondary_school](#)



[@thisiswinchmore](#)



[@winchmoreschool](#)

Summer 2024 GCSE Exam schedule and Exam Preparation sessions for Year 11

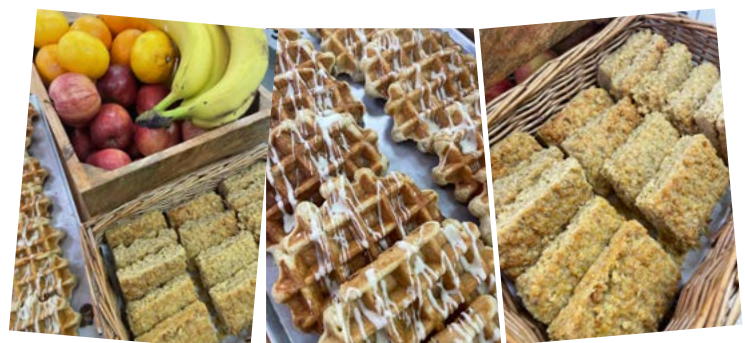
Week commencing 3rd June 2024

All this weeks scheduled Summer 2024 GCSE examinations are included below – students will need to refer to their own individual Exam Timetables for their specific exams. Each exam has at least 1 scheduled 'Exam Preparation' class which we would encourage all students to attend. *In addition, teaching staff will also be available during their regular 'scheduled' lessons throughout the exam season.*

Day	Monday 3 rd June	Tuesday 4 th June	Wednesday 5 th June	Thursday 6 th June	Friday 7 th June
Morning Exam (08:10)	Maths Paper 2 - Calculator	Spanish Listening and Reading	Geography Paper 2	English Language Paper 2	
Preparation session (Date/time, teacher, room)	3pm Friday 24 th JLU (wx1) – Room 66 MWA (wx2) – Room 61 CBE (wx3) – Room 69 SAL (wx4) – Room 9 EPO (wx5) – Room 68 RAB (yz1) – Room 62 ZNG (yz2) - Room 11 DNI (yz3) – Room 64 SDI (yz4) – Room 67 EBY (yz5) – Room 60	3pm Monday 3 rd SPE (yz1) – room 79 GPR (yz2) – room 77 JDU (yz3, yz4) – room 76	3pm Tuesday 5 th SSE (11A/Gg1 and 11C/Gg2) - room 25 KMA (11A/Gg2) – Room 24 NOZ (11B/Gg1) – Room 26 BYO (11C/Gg1) - Room 23	3pm Wednesday 5 th SSO (wx1) – Room 84 VAB (wx2) – Room 82 YDE (wx3) – Room 87 CDA (wx4) – Room 71 ONA (wx5) – Room 72 SBT (yz1) – Room 74 FMC (yz2) – Room 85 JWH (yz3) – Room 73 KSC (yz4) – Room 81 NAZ (yz5) – Room 70	
Afternoon Exam (12:40)	GCSE PE Paper 2	History Paper 2 – Medicine through time and Elizabethan England	Business Paper 2 Health and Social Care <i>(please see the Exams Officer if you have a clash)</i>	NCFE Business	Biology Paper 2
Preparation session (Date/time, teacher, room)	11:15am Monday 3 rd TPK – room 73	11:15am Tuesday 4 th ATA (11A/Hi1) – room 7 CKE (11B/Hi2) – room 5 LBE (11B/Hi1 and 11C/Hi1) – room 29	GCSE Business 11:15am Wednesday 5 th MPI – Room 73 H&SC 11:15am Wednesday 5 th KCO – Room 74	11:15am Thursday 6 th MAL (11B) - room 27 KHU (11C) - room 28 HHS (11yz) - room 73	3pm Thursday 6 th HJA (wx1 and yz1 combined, yz2) – SC12 TCO (wx1a, yz1a) – SC11 NDS (wx2a, wx3, yz3) – SC9 CKT (wx2, yz2a) – SC6 HLM (wx1 and yz1 Separate) – SC5

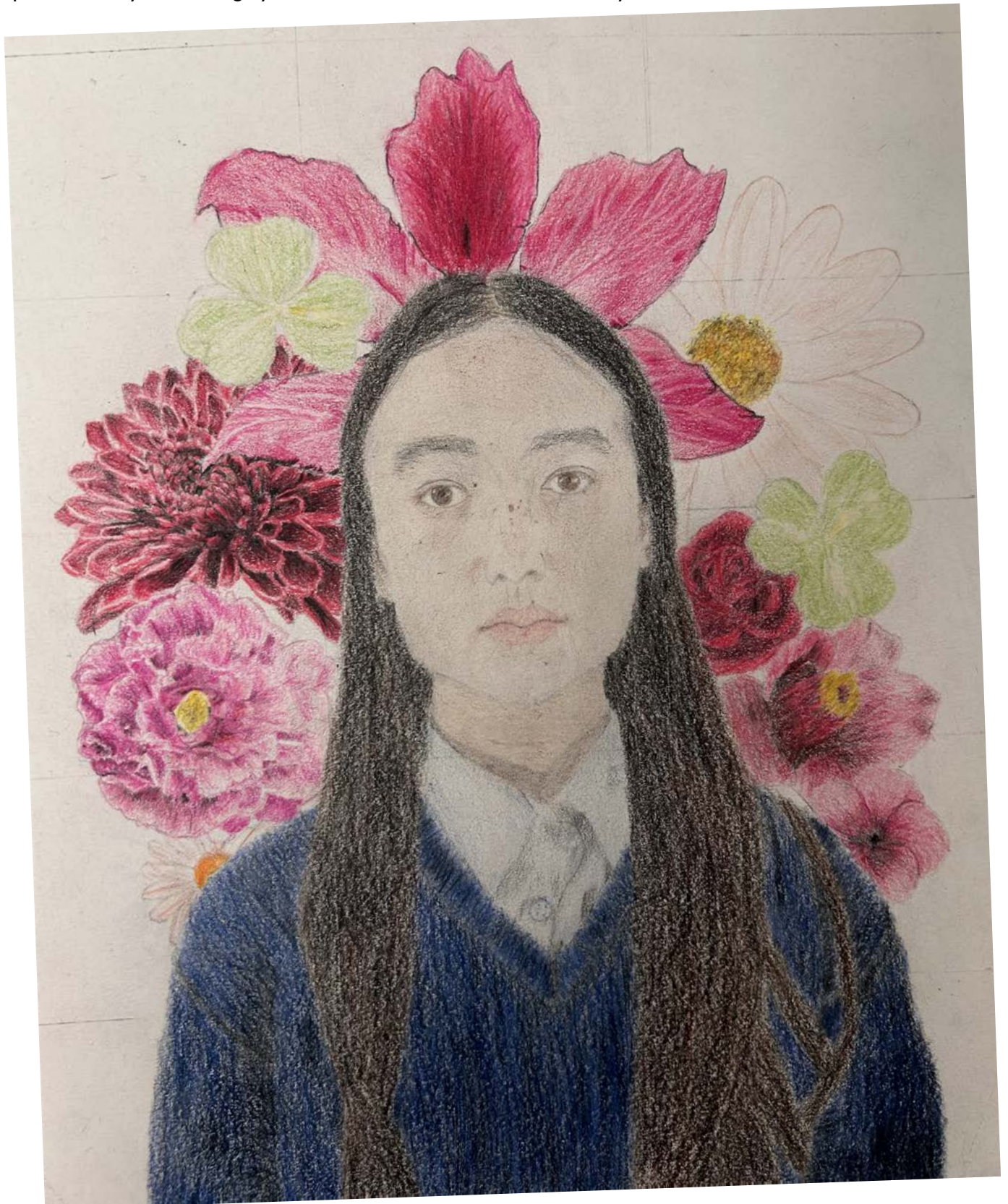
Free Breakfast for Year 11!

We are offering **Free Breakfast to Year 11 Students** while they are taking their exams. They can pick up a piece of fruit with a waffle or a flapjack from 7.45am every morning. **Just show your lanyard.**



Year 8 Self Portrait

Inspired by the artwork of Frida Kahlo, Kirsten Moller in 8L has completed this outstanding self portrait. Kirsten used radial symmetry to surround herself with flowers which represent her cultures of Hong Kong, Denmark and England. She also incorporated chrysanthemums to symbolise her birth month of November. Kirsten did an outstanding job at using self portrait and symbolic imagery to communicate elements of her identity.



T Level - Finance

WELCOME
TO THE
NEXT LEVEL

T-LEVELS

THE NEXT LEVEL QUALIFICATION



Winchmore School is constantly looking for opportunities to offer our students qualifications that are relatable in the World of Work and engage with specific sectors of the business community.

Many of our students have a keen interest in a career in the Finance sector and to support this we are offering our students the opportunity to study a T level in Finance.

T Levels are two-year programmes that offer an alternative to A levels and other 16-19 courses. They are technical-based qualifications in England, developed in collaboration with employers and businesses, with content that meets the needs of industry and prepares students for work, further training, or study. One T Level is equivalent in size to 3 A Levels. T Levels can be studied by 16-18 year olds after finishing their GCSEs. Students will study in school/college, but have to complete a 45 day work placement.

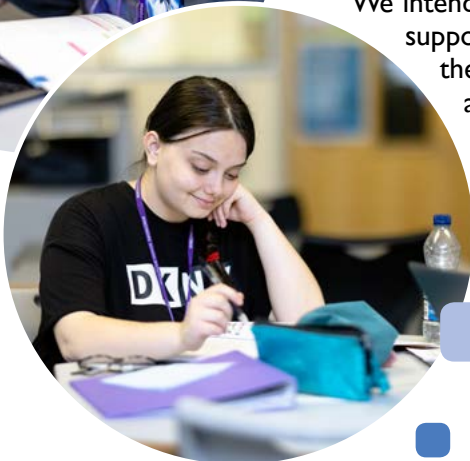
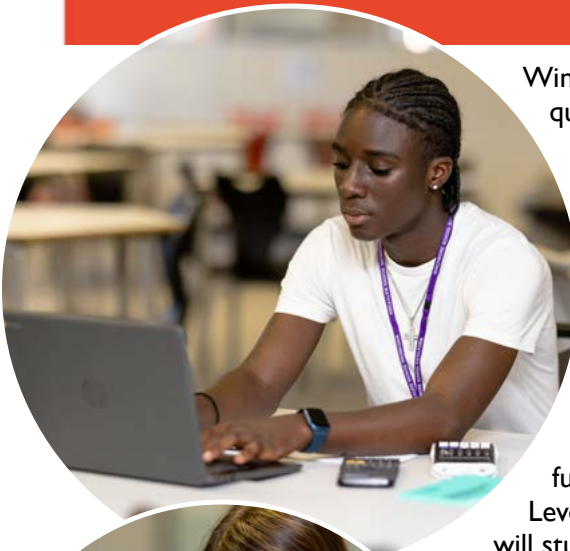
The DfE have produced a simple guide to T Levels:

<https://employers.tlevels.gov.uk/hc/en-gb>

We are looking for companies and organisations that would consider offering our students a placement as part of the T level qualification.

We intend to organise some information events for companies interested in supporting our students and initially we are asking parents and carers if they know of any companies that we could approach about T levels and invite to our information events.

**If you are able to offer support,
please email the school office on:
office@winchmore.enfield.sch.uk**



Literacy Corner

'WINCHMORE'S WORD OF THE WEEK' CHALLENGE - week beginning 3rd June:



Word of the Week: **Methodical**

Word Class	Adjective
Meaning	Done according to a systematic or established procedure.
Examples	<ul style="list-style-type: none"> - The scientist's methodical approach to the experiment ensured that every variable was carefully controlled and all data was accurately recorded. - The chef's methodical preparation in the kitchen ensured that every dish was cooked to perfection and served on time. - She followed a methodical study schedule, which helped her achieve top marks in all her exams.
Challenge	Have a go at today's Wordle : https://www.nytimes.com/games/wordle/index.html

What's the challenge? You must use the 'word of the week' in the correct context (where possible) in any of your subjects. If you are able to use it in the correct context (not just going up to your teacher and saying it – has to be relevant to what you are doing), you will get 1 'word of the week' achievement point.

Why are we doing this? To widen our vocabulary, oracy and understanding alongside encouraging a love for literacy across the school (in all subject areas).

Remember: that the student with the most 'word of the week' achievement points in the year group at the end of the half term will receive a voucher!

Enfield Carers Centre

CARERS WEEK

FAMILY FUN DAY

 Enfield Carers Centre
Empowering Carers

TOMBOLA STALLS **TALENT SHOW** **KIDS GAMES** **INFO STALLS** **BOUNCY CASTLES**

Saturday 8th June 2024
12 - 4pm
Enfield Town Library Green

LIVE ENTERTAINMENT **MUSIC** **MASCOTS** **FOOD & DRINK** **FREE ENTRY** **PRIZES**

Charity Reg. No: 1140089 

Trip to Kenya

Our students are travelling to Kenya in 2024 with Camps International on an exciting four week expedition in the summer. This is an opportunity for both Staff and Students. As part of the pre-departure process, we have to fundraise money for two teachers to accompany this expedition.

This expedition will provide challenging and life changing experiences, where the students will realise their full potential. We would really appreciate donations from the wider local community. We would like to take this opportunity and thank you in advance for your generous support.

One of the ways you can support us is by donating on our Go Fund Me Page:

<https://www.gofundme.com/f/the-cy-fundraising-for-school-kenya-trip>

Thank you for your Support!



**HIGH
SCHOOL
MUSICAL**



Winchmore Expressive Arts Faculty

REHEARSALS

Will start after Half Term

FULL CAST & CREW

**To come to the first rehearsal on
TUESDAY 4th JUNE**

more information will be posted on Google Classroom



Monday
3rd June

AFTER SCHOOL ACTIVITIES:

- **After School Club Library** 3pm to 4pm
- **Art and Photography Club** room A1 3-4pm (one-off poster workshop)
- **Music Tech Club** 3-4pm in M2
- **The Entrepreneurs Club** 3.15-4.15 in room 31
- **Debate Club** 3-4pm in room 81
- **Year 10 Science Boost** for invited students (3pm)
- **Year 10 Drama Rehearsal Boost.** 3pm in Dr1
- **SEND Scrabble club** (invited students - Year 9 & 10) - 3:15-4:15pm
- **Coding Club (KS3)** 3:00-4:00 Room 03
- **Rounders Club** - ALL Years 3:00-4:15pm

LUNCHTIME ACTIVITIES:

- **Careers Drop in** (Any Year group) - Careers Office
- **Lego Club** Years 7&8 - Wellbeing Room 1.15-2pm
- **Music rehearsal time**
- **Piano Club** 1:30-2pm
- **Drama Club** Dr2 All Years Invited
- **Year 12 Boost rehearsal** 3pm Dr1

AFTER SCHOOL ACTIVITIES:

- **After School Club** Library 3pm to 4pm
- **Pride Club** - 3.00-4.00pm in M2
- **Boys Football Club** - Year 9 - 3.00-4.30pm
- **Fitness (Resistance Training)** - Years 9-13 only - 3-4pm in the Fitness Suite
- **Basketball** 3:15-4:15pm
- **IMedia Boost classes** - Targeted Year 10 students 3-3.45pm
- **SEND (study skills - English & Science)** after school club - Year 9 and 10 invited students 3:15
- **Full cast and crew meeting HIGH SCHOOL MUSICAL** 3.15-4pm in DR1
- **Athletics Club** - All Years - 3:00-4.15pm

Tuesday
4th June

LUNCHTIME ACTIVITIES:

- **General Careers Drop in** (Any Year group) - Careers Office
- **Music rehearsal time**
- **KS3 Art Catch up club** - Every Wednesday lunchtime in A4

AFTER SCHOOL ACTIVITIES:

- **After School Club** Library 3pm to 4pm

Wednesday
5th June

LUNCHTIME ACTIVITIES:

- **Carnegie Shadowing Group.** Individual silent study and silent reading in the Library.
- **Drama Club** - Years 7-9 in DR1
- **Christian Club** - All welcome. In Room 23. 1.20-1.50pm
- **Music rehearsal time**

AFTER SCHOOL ACTIVITIES:

- **After School Club Library 3pm to 4pm**
- **Gardening Club** in the Wild Life Garden -3-4pm
- **Fitness (Resistance Training)** - Years 9-13 only - 3-4pm in the Fitness Suite
- **Basketball** - Years 10-13 - 3:15-4:15pm
- **Boys Football Club** - Year 9 - 3:00pm- 4:30pm
- **Guitar Club** - All Pupils - 3-4pm in M1
- **Year 9 Music Boost sessions** for all pupils 3pm to 4pm
- **Year 9 Maths Boost sessions** for invited students 3pm to 4pm
- **Year 10 Drama Rehearsal Boost.** 3pm in Dr1
- **Key Stage 4 and 5 Dance Club** 3:15-4:15 pm

Thursday
6th June

AFTER SCHOOL ACTIVITIES:

- **Table Top Gaming Club** - All Years - 3-4.15pm in room 68
- **Dance Club** - Years 7-9 - 3:15-4:15pm in Dance 2
- **Computing Boost classes** - Targeted Year 10 students 3-3:45pm
- **GIRLS fitness club** - 3:00 - 4:15 PM. *If you need any information, please see Miss Winter*

Friday
7th June



Free Toasted Bagels



Winchmore School have joined the
National School Breakfast Programme
to provide all students with a

FREE BAGEL

between 7:45am - 8:20am in the school's restaurant.



Trent Park Triffic Trail 2024

The ever popular Trent Park Running Club Triffic Trail will take place on 23rd June. It is a 10K (4.5K for juniors) run around the trails and paths in Trent Country Park.

It is a beautiful location with plenty of great views, woodland walks and fun running trails. This annual event attracts a range of entries from fast elite runners to first-timers and fun runners. The course has everything, from pathways and trails, woods and open fields plus a few hills and some fast roadways – the entire course is within Trent Park.

We have a race limit of 500 seniors. So enter soon, as the event is filling fast.

SUNDAY
23rd JUNE



Our supported charities:



CHICKENSHED
THEATRE KEEPING LIVES



Scan the QR for details or go to:

www.triffictrail.com

Winchmore School is **PROUD** to present:

Pride Group

What is a Pride Group?

A Pride Group is an all inclusive LGBTQ+ led group at Winchmore School which provides a safe place for students to meet, support each other, talk about issues related to sexual orientation and gender identity and expression, and work to end homophobia, biphobia and transphobia (HBT).



Why do we need a Pride Group?

Pride Groups often have a mix of different purposes:

- Get support and socialise
- Learn about LGBTQ+ topics and history
- Make positive change in your school

A bit more about Pride Group

- Will meet weekly on **Tuesday at 3:00 pm in room M2**
- Offers a fun, safe space for all!
- Welcomes LGBTQ+ students, allies or anyone with an interest in LGBTQ+ history and culture
- Pride group is open to all year groups

Want to know more?

Speak to **Mr Mills** (room M2) with any questions you have.