



W  
I  
N  
C  
H  
M  
O  
R  
E  
S  
C  
H  
O  
O  
L



Dear Parents/ Carers,

As we reach the end of another really successful Autumn Term, I am writing to thank you once again for your continued support, and to keep you informed of the most recent developments; we have achieved our best ever results in last years public examinations at KS5, and very good results at KS4 placing us 'above average' when compared to all schools nationally and locally, which is a testament to the hard work of our students and teachers. Due to their excellent results, an increased number of our sixth form students have gone on to top universities thanks

to the exceptionally hard work of the sixth form team. We are very proud of the progress made by our students, and their achievements both inside and outside the classroom. Our Sixth Form continues to be the largest in North London with just under 600 students, and more than 1000 students applying to join us in Year 12. We continue to offer the widest variety of post 16 courses ever, with the vast majority of our students choosing to remain with us. I am delighted to inform you that for the eighth year running we have seen another increase in the number of students applying to join us in Year 7 and continue one of the most popular schools in the Local Authority. We have just moved into our new state of the art sixth form centre which is absolutely stunning, and very popular with students and staff. We are very grateful to the Local Authority, and Council Members for their support in making this project a reality.

We remain committed to our extra-curricular provision, especially in the Arts and sport, and I am very grateful to our staff for giving their time, and to you for supporting the students in attending extra clubs and classes. The travel opportunities provided by our staff are second to none. As a result of this work, particularly Mrs Tidmarsh, we have just been awarded the Learning Outside the Classroom (LOtC) Bronze award. Please encourage your children to take part in a residential trip, it often creates not just wonderful memories, but better social understanding, friendship groups and a greater engagement with the school leading to better progress.

The work of our Inclusion Faculty, led by Mrs Owen has once again been recognised nationally, leading to us being invited to present to schools across London about best practice in meeting the needs of students with SEND. We are currently working with the DfE to further develop provision for students with SEND in mainstream settings.

The behaviour of our students continues to be of a very high standard both in school and on the way to and from school, thanks to your support, and the number of lessons disrupted by poor behaviour has decreased, thanks to the work of our staff and your continued support. Please continue to reinforce the very high standards I know you have at home; working together we have a far greater impact. I am particularly proud of the way our students have conducted themselves during the recent disruption from the cold weather.

On a personal note, my wife and I would like to thank you all for your kindness and support; our daughter, Meghan is now six years old and in Year 1. We are preparing to meet our family in the snow for Christmas, and are aware of how lucky we are to have such a wonderful family. I wish you and your families a wonderful Christmas, and please take the opportunity to give to charities which support the homeless, children, and those less fortunate than ourselves at this time of year.

Jim Owen - Headteacher



winchmore\_secondary\_school



@thisiswinchmore



@winchmoreschool

13.12.24

## Attendance News

As we come to the end of this term, I wanted to say a big thank you to all our Parents who have been keeping in touch with the Attendance Office this term, reporting absences and advising us of appointments etc. Please be reminded, all absences do have to be accounted for; unexplained absences are unauthorised and could lead to a referral to the Education Welfare Service.

We will be in contact with Parents again at the start of the new term, for those students who we are concerned about.

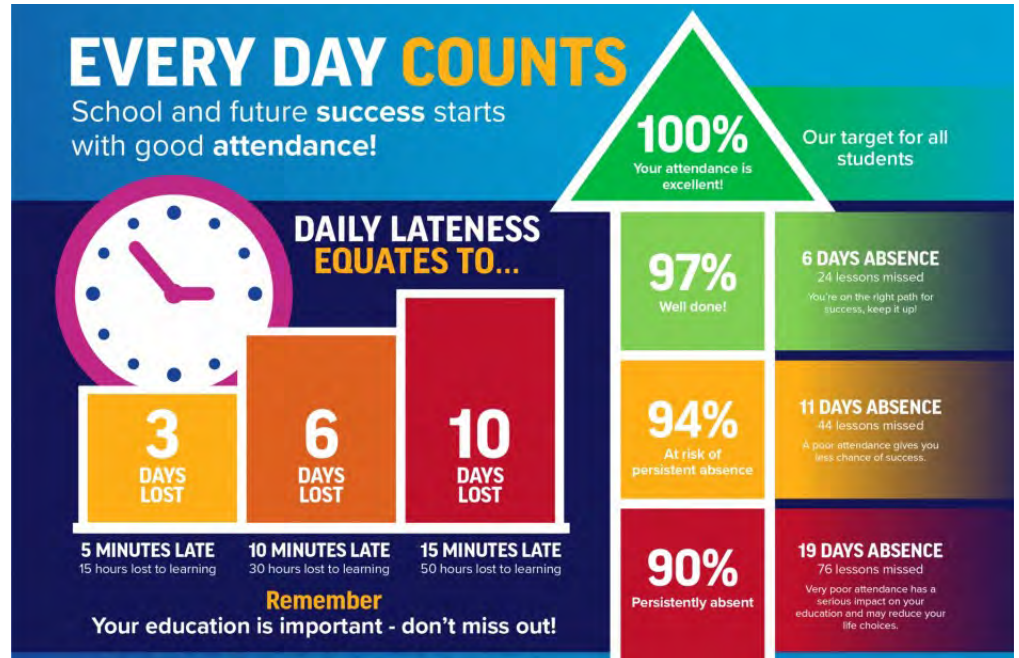
Parents, if you are experiencing difficulties getting your child into school, please talk to us! We are here to support you and your child; we want your child to have a positive school experience. We are all here to help and advise, whether it is your child's Form Tutor, Year Head or the Attendance Office/ Family Engagement Officer. Please contact us via email [attendance@winchmore.enfield.sch.uk](mailto:attendance@winchmore.enfield.sch.uk) and we will get back to you.

Please see our Autumn Term figures; We have had some concerns about the number of students arriving late to school this term, so there has been a big push on this, with lunchtime detentions issued; this will continue next term. Please note, our registers close at 9am, so any arrival after this time is unauthorised. If there is a genuine reason for lateness, please contact us or send your child in with a letter.

Late arrival to school has a negative impact not only on your child's learning, but disrupts the learning of others when classes are interrupted. I would be grateful if you could support your child getting to school by 8.20, for lessons to start smoothly at 8.30am.

We wish you all a peaceful, enjoyable holiday and look forward to seeing you in the New Year!

Ms Turner & Attendance Team



### Attendance & Punctuality

Period: 02/09/2024 to 11/12/2024

Reg	% Attend	% Punctual
7L	97.3	98.6
7A	95.4	96.5
7B	97.3	98.8
7U	95.2	96.7
7R	96.2	98.9
7N	97	98.5
7M	95.4	98.2
7G	96.9	97.6
<b>Totals</b>	<b>96.3</b>	<b>97.9</b>

Reg	% Attend	% Punctual
8L	95.7	97.7
8A	94.9	98.3
8B	94	96.6
8U	93.4	98.6
8R	93.6	95.3
8N	95.5	97.3
8M	93.8	96.7
8G	95	96.6
<b>Totals</b>	<b>94.5</b>	<b>97.1</b>

Reg	% Attend	% Punctual
9L	94.5	98.5
9A	93.9	95.5
9B	94.8	96.2
9U	93.9	99
9R	93.7	95
9N	94	97
9M	92.7	96.4
9G	94.4	97.4
<b>Totals</b>	<b>94</b>	<b>96.9</b>

Reg	% Attend	% Punctual
10L	91.8	95.7
10A	92.4	95.8
10B	94.2	96.5
10U	94.2	97.8
10R	92.8	97.3
10N	92.9	94.8
10M	88.4	96.5
10G	94.8	95.8
<b>Totals</b>	<b>92.6</b>	<b>96.3</b>

Reg	% Attend	% Punctual
11L	90.2	95.8
11A	93	95
11B	92.5	96.3
11U	91.5	94.9
11R	96.2	97.9
11N	91.8	95.7
11M	88.7	95.3
11G	93.6	98.9
<b>Totals</b>	<b>92.2</b>	<b>96.2</b>

% Total	
Attend	93.9
Punctual	96.9

## Sixth Form Enrichment

**Journalism Academy** - Our young journalists work in association and under the guidance of Rob and Sam from YJA - their written articles are discussed within our editors meetings and then submitted work is professionally edited and reviewed before being published online. The high standards of our students have not gone unnoticed by the Young Journalism Academy staff who consistently praise the efforts and quality of our sixth form work.

Collectively, our student's articles have exceeded 21 000 views from both the UK and worldwide since November, which is exceptional numbers.

Published Articles can be found using these links - please do read, comment and praise our excellent writers!

<https://youngjournalistacademy.com/warren-peace/>

<https://youngjournalistacademy.com/is-the-criminal-justice-system-around-the-world-becoming-more-corrupt-by-the-day/>

<https://youngjournalistacademy.com/dominating-liverpool-fc/>

<https://youngjournalistacademy.com/are-video-games-negatively-affecting-the-perception-of-women/>

<https://youngjournalistacademy.com/the-downfall-of-the-walking-dead/>

<https://youngjournalistacademy.com/social-media-brainwashing-children/>

<https://youngjournalistacademy.com/history-of-fashion/>

<https://youngjournalistacademy.com/the-portrayal-of-women-and-beauty-standards-in-the-media/>

**Engineering Society** - On Tuesday 10th December the Engineering society visited The Engineering and Design Institute in London. TEDI-London is a specialist institute for future engineers. Students were given a campus tour and engaged with several members of staff and current students, allowing them to experience what it might be like to continue their enthusiasm for engineering in higher education.

So far, the Engineering society has had several guest speakers talk to them about their career in the engineering industry, answering questions and giving valuable insight into their field of expertise. Our speakers have been:

- Karl Dring - UK Power Networks
- Emily Pearson - ARUP
- Ally Macleod - Electrical Engineering Lecturer

The Engineering society were also tasked with projects set by Mrs Goddard - the results were produced in our final meeting of the year. The students created some really inventive pieces!



# WINCHMORE WEEKLY

**School Photographers** - The school photographers have been busy capturing photos and videos of Winchmore School's Open Evening, Sixth Form Open Evening including images of the fantastic new Sixth Form building showcased that night for our new potential students to see, and capturing the rehearsals and show nights for High School Musical. All images (as seen on the right) can be found on the school website.



**Psychology Society** - The psychology society has also had guest speakers to give students an insight into their career within the industry. Holly Marques, Winchmore Alumni student, visited to explain about her Psychology role within the government. We also welcomed Yiselle Santos Rivera who's job lends itself to the inclusivity within architecture.



**Medical Society** - We held a meeting with Neil from Boundary House Surgery as part of their Patient Panel. He was also able to assist with several students who are completing an EPQ linked to the medical field.

We also met with Liam from Moorfields Hospital to learn about the work at the hospital and how patients access treatment, the adaptations that need to be in place for this specific area of medicine and how essential the work of their volunteers are.



Students have also been conducting research projects that were presented to the group based on a range of interesting medicine based topics.

**Law Society** - The law society is now beginning preparations for LNAT tests, taking a look at exemplar materials and questions to help them revise. They have also had guest speakers, including Enioloa Asaolu from the Bank of New York and Winchmore Alumni.

**Feed the 100 charity bags** - sixth form students have been taking part in decorating Christmas bags for the charity Feed the 100; a charity created by Ms Yianni. The bags will be filled with essential items for homeless people. The students efforts were greatly appreciated and the results were wonderful.



## Science Workshop

On Friday 29th November 31 year 6 children from Highfield Primary School joined us at Winchmore school for a science workshop. The children were involved in different experiments including; using different indicators to test for acids, alkali and neutral solutions. They also got to see the methane bubbles demonstration which they really enjoyed. The children were amazing, they knew so much about science and were so well behaved and so excited to be taking part. Thank you to all the science staff involved Senior Science Technician Mr Amit Nagrani for preparing all the resources and Antonia. A special thank you to all the children involved and the staff from Highfield Primary School.



Thank you Dr Ktori  
Head of Science and Head of Chemistry

## Year 7 Trip to see Pan

On Tuesday 10th December, 58 of our Year 7 students and 2 of our Year 8 students visited the Chickenshed Theatre to watch the local production of 'Pan'. The theatre's 50th Anniversary Christmas show.

We Soared from the starry night skies of London on an unforgettable journey to 'Neverland', where fairies flit, pirates plot, and the Lost Ones await their happy ending. Students were mesmerised. We were very fortunate to see some of our Winchmore Alumni performing on stage in main parts. Congratulations to Jimmy Adamou who plays Smea and Olive Fry, who debuted as Smee for her first ever performance. We were also presented with a 50th Anniversary hardback book about the history of 'The Chickenshed Theatre'. This will be on display in the school library.



The show was delightful, funny and inclusive of everyone. Such a fantastic performance and everyone enjoyed their popcorn in the interval. The students did Winchmore School proud and were great role models. Thank you to all the staff who supported the trip, Mr Melling, Mr Lockyer-Merchant, Mr Nagrani, Mrs Winter and Miss Tidmarsh. The students and staff all thoroughly enjoyed the show and cannot wait for the next one!!

Congratulations to our fellow Winchmore students both past and present, who are currently performing in the chickenshed show. You are all outstanding performers: Scarlett Sutton 8B, Kal El Salahi 9M, Lale Salahi 10L, Lexi Hobbs Martin 10G and Joseph Malhotra 10G.

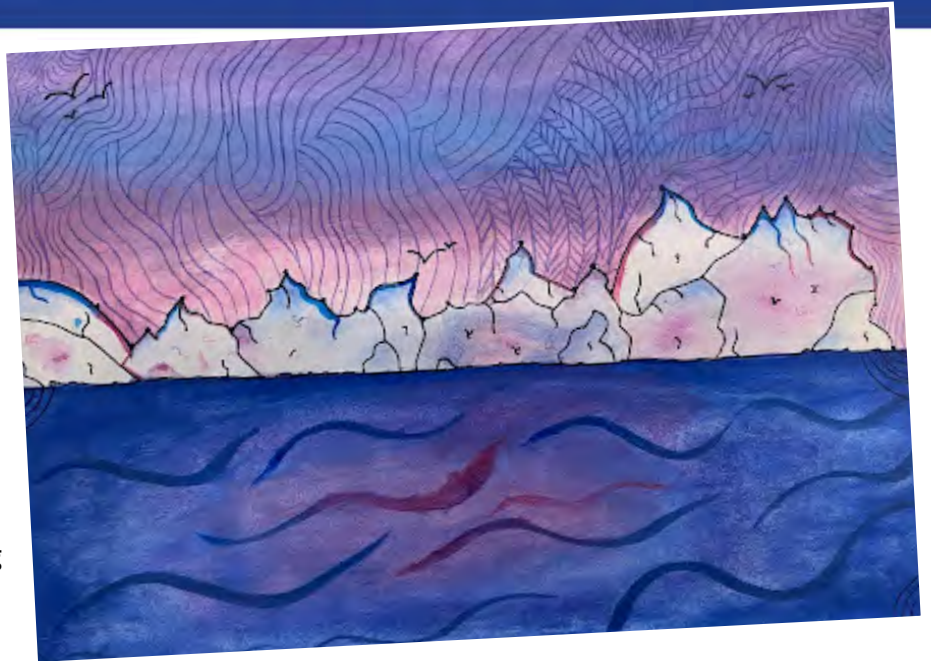
Miss De Souza - Head of Year 7



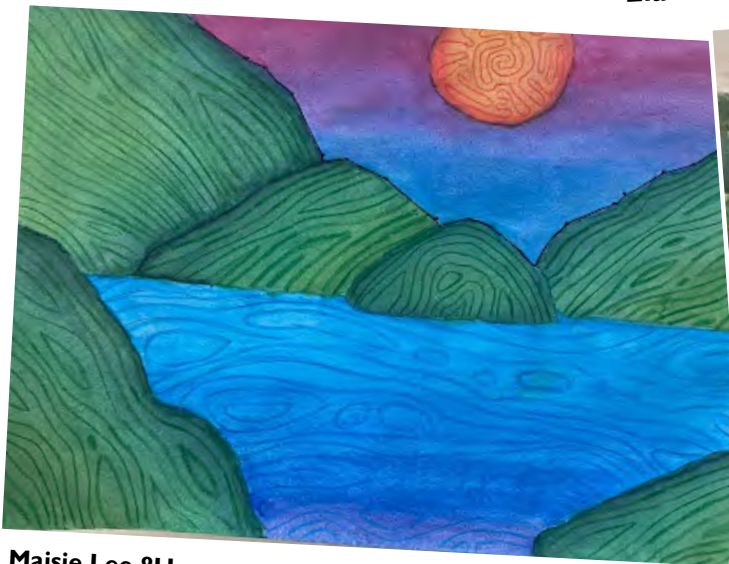
## Year 8 Art

Students in Year 8 Art have produced some outstanding responses to their investigations into the work of climate change scientist and artist Jill Pelto. Students took elements from the artists style and applied them into their own designs.

Here you can also see some excellent examples of the watercolour techniques students have been refining, such as blending and layering.



Ela Cihan 8A



Maisie Lee 8U



Neriah Eduardo Da Silva 8U

## Children's Health Information Events

This winter, childhood health experts in North Central London are hosting two children's health information events for parents. The online sessions are free and open to any parent or carer living in Barnet, Camden, Enfield, Haringey or Islington, and are an opportunity to hear and ask questions about common childhood illnesses and injuries. There are four sessions to choose from and all will cover the same topics:

- Tuesday 17th December 10am
- Tuesday 17th December 8pm
- Tuesday 14th January 10am
- Tuesday 14th January 8pm

[CLICK HERE FOR MORE INFORMATION](#)

## Psychology in Action Conference

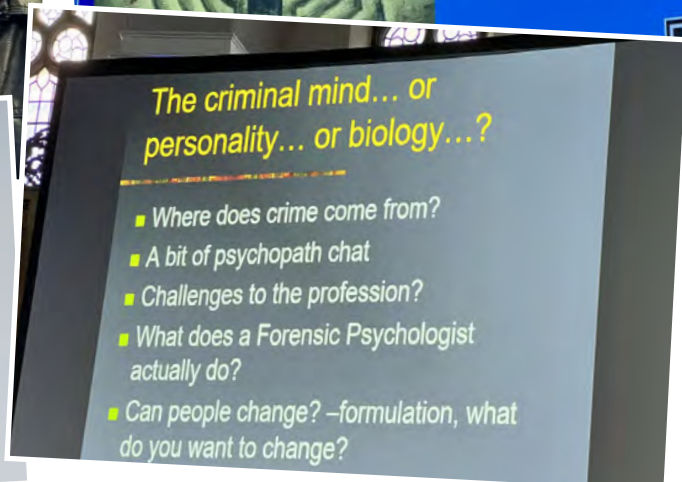
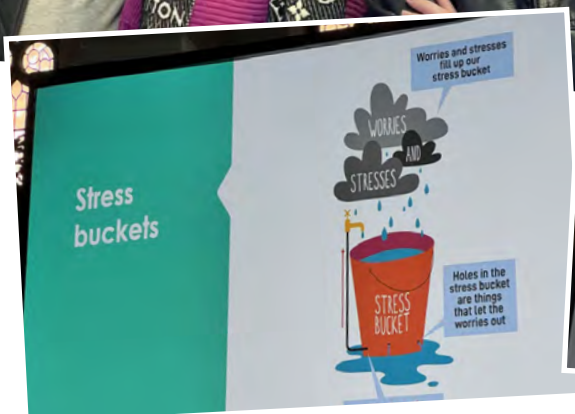
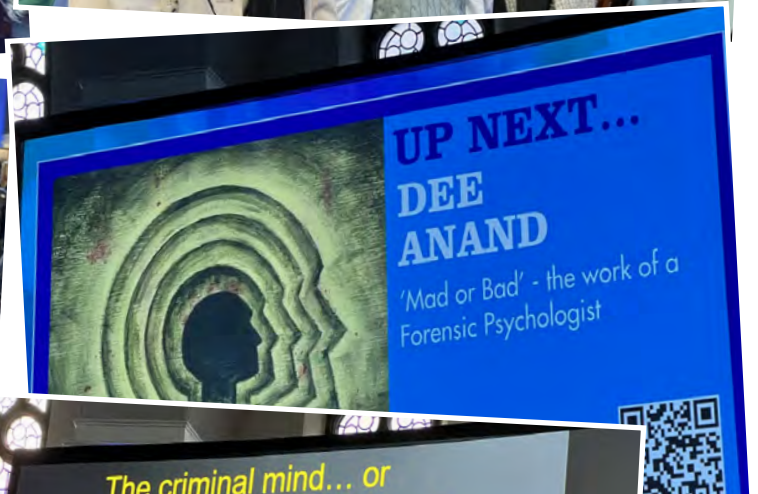
The Psychology Department took 30 Year 12 students to the annual Psychology in Action Conference in Westminster on Friday 29th November with numerous other schools around the country.

We listened to five amazing guest speakers;

- \* Dee Anand (Forensic Psychologist) - Are criminals 'Mad' or 'Bad'?,
- \* Dr Katie Long (Neurobiology Researcher) - How does the Human Brain Develop?
- \* Professor Claire Loveday (Neuropsychologist) - Living without Memory
- \* Professor Brendan Walker (Founder and Director of the Thrill Laboratory) How to engineer an extreme emotion.
- \* Dr Lucy Maddox (Consultant Clinical Psychologist) Working with Young People as a Clinical Psychologist.

Y12 students left inspired with a wider understanding of real life applications from different sectors within the field of Psychology. They showed exemplary behaviour and engagement throughout the whole day!

Ms Bheekoo - Head of Psychology



## Year 12 Drama Trip

On Monday 11th November Year 12 Drama students went to Theatre Craft 2024 at the Royal Opera House. This was an incredible event where the students got to go backstage at a number of different venues in the West End. They were able to explore backstage at the Lyceum where the Lion King has run for many years. They also had a tour of behind the scenes at the Wyndham's Theatre where Oedipus is being performed and will be lucky enough to experience this from an audience's perspective next week.



Students got to meet and hear from costume creators and designers, stage managers, lighting technicians and see them all at work. It was such a fantastic opportunity to understand the many different roles required to put on a large scale production in the West End.

There was also a careers fair with universities, theatre schools and companies offering apprenticeships. A great chance to see what these all offer and compare their suitability for what our students are interested in.

A superb event for students to understand the range of career opportunities available to them within the world of theatre.

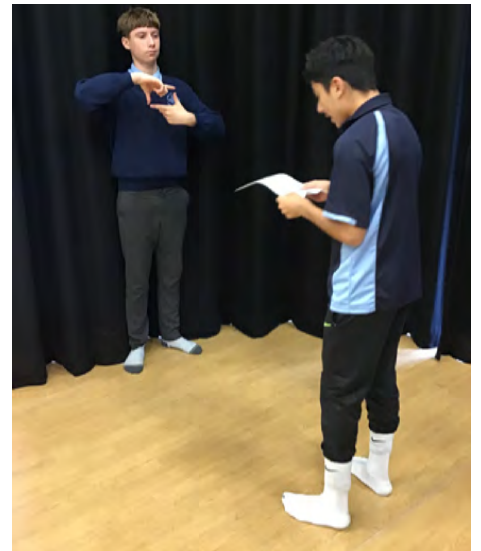
## 'Stanislavski Experience' Workshop

On Wednesday 4th December we were lucky enough to have a visit from Nick at the 'Stanislavski Experience' who ran a workshop with our students.

Firstly Year 10 explored a range of techniques associated with Bertolt Brecht, the well known theatre practitioner. The students have recently embarked upon their devising process and this was a great opportunity to get students to think about how they could create more thought provoking theatre for their audiences.

Year 12 and 13 then took part in a workshop where they applied Brecht's techniques to Woyzeck, their exam set text. This was an invaluable opportunity for them to contextualise the work they have been doing and prepare them for the January mock exams.

This was a fantastic opportunity for all of the students involved, funded by the Jack Petchey Foundation, Educational Fund.





ENFIELD YOUTH

# ELECTIONS



Do you want to use your voice to represent young people in your community and drive social change through meaningful advocacy and campaigning at both local and national levels? If so, stand in the Enfield Youth Elections! As an elected member, you'll have the chance to represent and participate in:

- The Enfield Youth Council – Represent the views of young people locally within Enfield.
- NYA – Represent young people nationally.
- The London Youth Assembly – Advocate with other boroughs within London.
- Elected as Mayor and Deputy Mayor - Represent the interests of young people in the borough to politicians, residents, public services.
- Sit on scrutiny panels - Ensure Councillors and Officers are held accountable for the decisions they make on behalf of community.



## To qualify to stand for election you must:

Be aged 11-17 (or up to 25 if you have SEND)  
Live or attend school or any place of education in Enfield

## NEXT STEPS

Are you interested in becoming a candidate for the EYE?  
If so, there are two steps that you need to take:

### STEP 1

Write an email which includes your full name, DOB, full address, email and contact number to [youthcouncil@enfield.gov.uk](mailto:youthcouncil@enfield.gov.uk)

### STEP 2

Attend the Enfield Youth Council Introduction Day **Monday 16th December 2024 5.30pm -6.30m** at Enfield Civic Centre or online on **8th January 2025** same time via Teams.

## Interested?

Email [youthcouncil@enfield.gov.uk](mailto:youthcouncil@enfield.gov.uk)

<https://youthenfield.taptub.co.uk/enfield-youth-elections>





## What are you Reading?

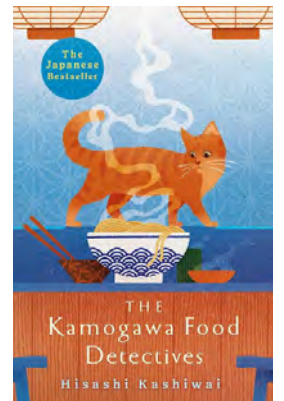
I'm Miss Falconer and I am the Literacy Coordinator at Winchmore School.

It's really important that we encourage our students to foster a love of reading as it offers numerous benefits, from expanding knowledge and improving vocabulary to boosting imagination and creativity. It helps reduce stress by providing an escape, while also enhancing focus, concentration, and memory. Regular reading fosters empathy by allowing you to experience different perspectives and encourages lifelong learning. Overall, it is a powerful way to stimulate the mind and nurture personal growth.

Therefore I encourage you to pick up a book and start reading. Whether it's on the bus home, before you go to sleep, or while you're waiting to pick your sibling up from school. Expand your mind and discover something new. If you feel inspired, I encourage you to write a short review of your book and send it to me at [madeleine.falconer@winchmore.enfield.sch.uk](mailto:madeleine.falconer@winchmore.enfield.sch.uk) and you will be published in the Winchmore Weekly!

Recently, I've really been enjoying reading books that are more soothing and relaxing as we are in the Winter season and "The Kamogawa Food Detectives" is like being wrapped up in a warm hug. Set in a quiet back street in Kyoto, the book follows a father-daughter duo who own a restaurant and through creative and ingenious investigations, are able to recreate forgotten dishes from a person's memories and past. Each chapter follows a different person and their forgotten dish, unfurling the origin quietly alongside mouthwatering descriptions. There is a beautiful simplicity in this book - it's a loving exploration of the emotional relationship between food and memory, and will leave you wondering what your forgotten food would be as well as leaving you incredibly hungry!

Miss Davis - Teacher of English



L  
I  
T  
E  
R  
A  
C  
Y  
  
C  
O  
R  
N  
E  
R

## WINCHMORE'S WOW! WORD OF THE WEEK

## Assumption

Week beginning 6th January



**Word Class** Noun

**Meaning** A thing that is accepted as true or as certain to happen, without proof.

**Examples**

- It's a common assumption that eating healthy is always expensive, but that's not necessarily true.
- Without evidence, his assumption about the outcome of the experiment holds little weight.

### GCSE Maths Question:

- A car travels 100 km in 2 hours. The calculation of its average speed is based on the assumption that the car travels at a constant speed.
- What is the car's average speed in km/h?

**Challenge** Wordle : <https://www.nytimes.com/games/wordle/index.html>  
Connections : <https://www.nytimes.com/games/connections>

Monday  
6th January

### LUNCHTIME ACTIVITIES:

- Library
- Music Production Club in M2
- Year 11 Digital Art Boost 1:15pm - Targeted Students only
- Year 11 Health and Fitness Boost 1:15pm - Targeted Students only
- Year 10 English Boost - all welcome
- Girls Leadership Group - Wellbeing room

### AFTER SCHOOL ACTIVITIES:

- After School Club Library 3pm to 4pm
- Art and Photography club A1 3:15 until 4pm
- Year 11 Boys Football - 3pm-4.15pm on the field
- Year 11 IMedia Boost class 3-3:45pm - Room 3
- Year 11 Geography Boost class 3-3:45pm
- Year 11 Textiles Boost 3-3:45pm
- Year 11 Media Studies Boost class 3:45pm-4:30pm - Room 88
- Year 10-13 Dance Club - 3.15-4.15pm in DA2
- All Years - Art Club room A1 3.15-4.00pm
- Scrabble club - Monday 3:15-4:15 pm in the EAL room (selected students)
- Film Club 3:00pm-4:00pm- Room 88
- Debate Club – Model United Nations 3-4pm Room 85

### LUNCHTIME ACTIVITIES:

- Library
- Piano Club in M1
- Year 11 Digital Art Boost 1:15pm - Targeted Students only
- Wellbeing Room is open - all years welcome

### AFTER SCHOOL ACTIVITIES:

- After School Club Library 3pm to 4pm
- Year 9 Boys Football - 3pm-4.15pm on the field
- English for specific SEND students 3:15-4:15 pm in the EAL room
- Year 11 English Boost classes (selected students, but all welcome) 3pm - 3:45
- Year 11 Spanish/French Boost classes (selected students, but all welcome) 3-3:45 & 3.45-4.30
- Year 10 and Senior Netball Club
- Year 11 IMedia Boost class 3:45-4:30pm - Room 3
- Year 9 & 10 Girls Football Club. 3-4pm

Tuesday  
7th January

### LUNCHTIME ACTIVITIES:

- Library
- Piano Club in M1
- Year 11 Health and Fitness Boost 1:15pm - Targeted Students only
- Poetry By Heart – 1:30-2pm Room 85
- Wellbeing Room is open for Lego Club

### AFTER SCHOOL ACTIVITIES:

- After School Club Library 3pm to 4pm
- Year 10 Boys Football - 3pm-4.15pm on the field
- Year 11 RE Boost sessions 3pm-3.45pm

**TRIP: Year 7 Progress trip to see the Lion King**

Wednesday  
8th January

**Senior Students Study Day** - School is open to invited students only

**LUNCHTIME ACTIVITIES:**

- **Library** - quiet reading only
- **Christian Club** - Room 23

**TRIP - YR13 Sociology Conference**

Thursday  
9th January

Friday  
10th January

**LUNCHTIME ACTIVITIES:**

- **Wellbeing Room** is open for **crochet club** - all years welcome
- **Library**

**AFTER SCHOOL ACTIVITIES:**

- **Year 11 GCSE PE Intervention** - 3-3:45pm - Room SC2
- **Year 11 IMedia Boost class** 3-3:45pm - Room 2
- **Year 11 Computing Boost class** 3pm or 3:45pm - Room 3 or 1
- **Year 11 Art Boost class** 3-3:45pm - Room A4
- **Year 11 Sociology Boost class** 3-3:45pm - Room 10
- **Year 11 GCSE Business Boost class** 3-3:45pm - Room 30
- **Year 11 Geography Boost classes** 3-3:45pm or 3:45-4:30pm
- **Year 11 History Boost classes** 3pm - room 29
- **Year 7-9 Dance Club** - 3.15-4.15pm in DA1
- **Winchmore Tabletop Society** - 3:00 - 4:30 in room 88

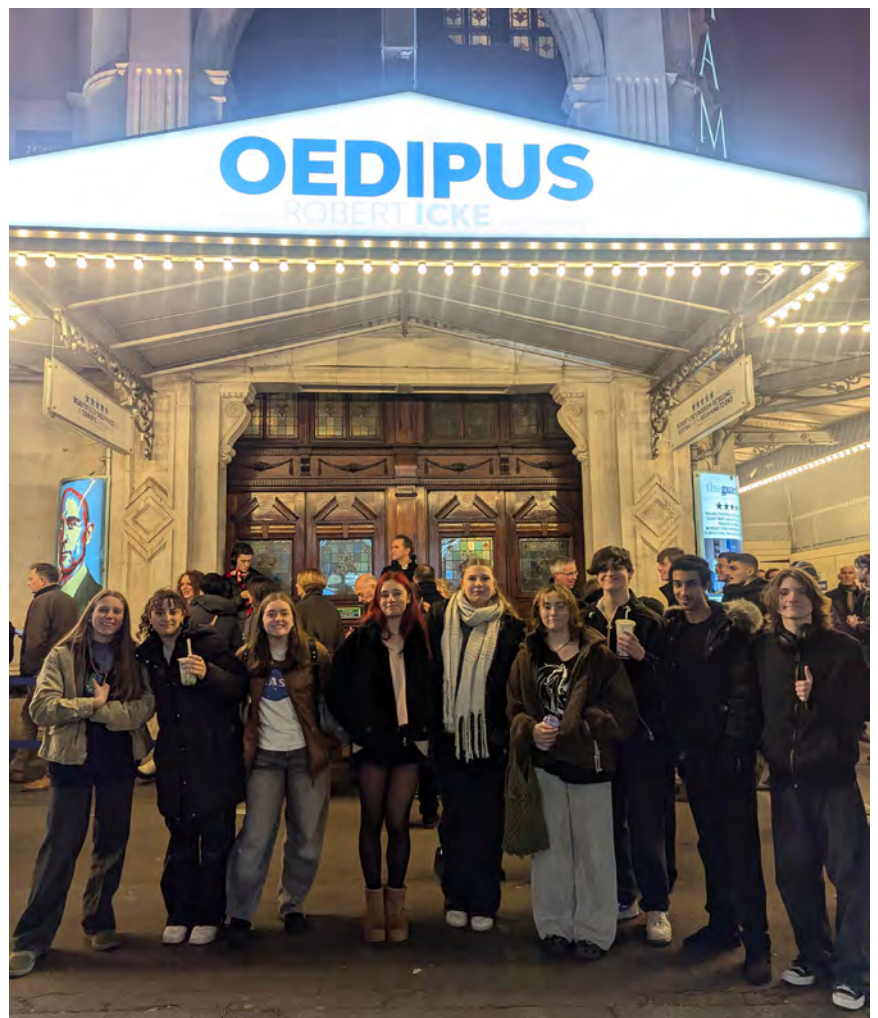
## Oedipus Drama Trip

On Wednesday 11th December, Year 12 and 13 Drama students went to see Oedipus at the Wyndham's Theatre. The play was riveting from beginning to end and the two hours with no interval passed quickly. Sophocles' original play was adapted to a modern day version set on election night in a campaign room. Mark Strong, Leslie Manville and June Watson were captivating throughout. Students said it was the best show they have seen this year so far.

*'The actors were flawless'* Conor Green

*It was a captivating story with sensational performances from every single cast member.'*  
Koray Zihni

This will be a difficult one to beat!



YOU ARE INVITED TO

# FIRS FARM WINTER TRAIL

15 | FREE | 1-5  
DEC | ENTRY | PM

WINTER WALKING TRAIL -  
FOOD & DRINK - LIVE MUSIC  
SANTA'S GROTTTO

Firs Farm Wetlands,  
Firs Lane



## Winchmore School Science Student Interface



Self Study @ Home

Independent Learning

May 2024- User friendly Interface



SEPTEMBER 2024

Keystage 3 , GCSE Science & A Level Chemistry -  
Complete course is now available on Student  
interface.

2024

2025



Dr. Ktori

Head of Science



2024

improved

Student Interface

Link- [bit.ly/winchmorescience](https://bit.ly/winchmorescience)

Designed for Better Student Learning Experience

Google Slides , Textbook pages , Worksheets , Past  
Papers , Textbook Answers, Markschemes, Videos ,  
Revision , Summary & Practice questions, Core  
Questions, Knowledge Organisers , Podcast , Topic  
based Exam questions , Required Practicals , Exam  
Information . All in One Place

How to access all the contents linked on Science Student Interface

- Open [Google Chrome Browser](#) .
- Click the button 'Sign in' on the [Top Right hand side](#) of the Browser.
- **Note** - If you are already Signed in with your [Personal email id](#) then remember to [Sign out / Log Out](#) first .
- Sign in using your [Winchmore School email id and password](#) .
- Once Logged in with your [Winchmore School Email ID](#) Type on the [Browser address bar](#) - [bit.ly/winchmorescience](https://bit.ly/winchmorescience)
- Remember all Study material is 'View Only' . You cannot edit an existing resources .
- [Open](#) or [download](#) the resources or [Print](#) . View and make notes on your exercise books . Check your answers using [Mark Scheme](#) linked

Coming Soon - A Level Bio & Physics complete course

Prepare . Learn . Practice . Revise

# HAF Enfield Winter 2024

23rd December  
- 5th January

**FREE\*** places available on  
Enfield's Holiday Activities and  
Food (HAF) programme this  
winter. For more information  
visit

[www.enfield.gov.uk/  
services/children-and-  
education/holiday-activity-  
and-food-programmes](http://www.enfield.gov.uk/services/children-and-education/holiday-activity-and-food-programmes)

\*Free for those in receipt of  
benefits related free school meals

Ages  
Reception  
to Year 11



Arts &  
Crafts

Get  
Active

Free  
nutritious  
meals

Music

Day  
Trips

Plus  
much  
much  
more!

Funded by



Department  
for Education

[www.enfield.gov.uk](http://www.enfield.gov.uk)

**ENFIELD**  
Council