



WEEK 1

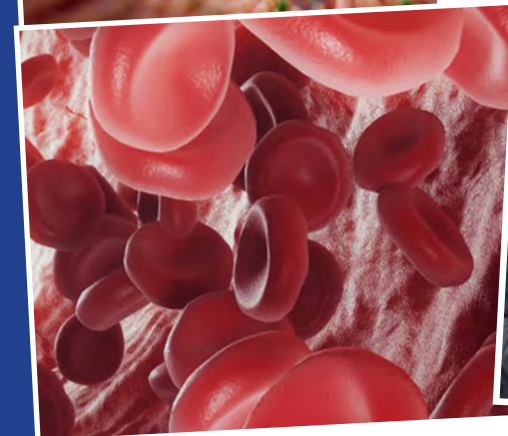
WEEK 1  
20th April

## Year 8 VR Biology Workshop

Today, some of our Year 8 students embarked on an extraordinary adventure, trading their desks for a journey into the “inner space” of the human body. Through the power of a VR workshop, students literally shrunk down to the size of an atom to see biology in action like never before.

Students “rode” the bloodstream to see how oxygen travels to every corner of the body and had an eye-opening look at how our bodies turn food into fuel. They had the chance to explore the incredible framework of the human body that supports us every day.

The experience provided a profound, visual understanding of our curriculum topics, helping students connect deeply with the wonders of human biology.



17.04.26



winchmore\_secondary\_school



@thisiswinchmore



@winchmoreschool

## Year 8 Self Portraits

Year 8 have been exploring their skills in Self Portraiture, creating symbolic self portraits inspired by Frida Kahlo. Take a look at some of these fantastic examples!



Florence Devane



Arish Zaman



Marnie Young

## Science Workshop

On Friday 27th March, 30 year 6 children from Hazelwood Primary School joined us at Winchmore school for a science workshop for the first time. The children were involved in different experiments including; using red cabbage indicator to test for acids and alkalis using household items. They also got to see the methane bubbles demonstration which they really enjoyed. The children were amazing, they knew so much about science and were so well behaved and so excited to be taking part. Thank you to all the science staff involved; Senior Science Technician Mr Amit Nagrani for preparing all the resources, Antonia, John, Miss Cetin, Mr Czemyers and the PGCE teachers. A special thank you to all the children involved and the staff from Hazelwood Primary School and we are very happy to be working with you and your school.



## Available in the Library...

### Maya Angelou - Lisbeth Kaiser

Maya Angelou spent much of her childhood in Stamps, Arkansas. After a traumatic event at age eight, she stopped speaking for five years. However, Maya rediscovered her voice through wonderful books, and went on to become one of the world's most beloved writers and speakers.

Little People, BIG DREAMS is a bestselling biography series for kids that explores the lives of outstanding people, from designers and artists to scientists and activists. All of them achieved incredible things, yet each began life as a child with a dream.



## Welcome to MFL Corner!




We are excited to introduce this new section of our Winchmore Weekly, dedicated to celebrating the joy of learning languages. Whether you are just beginning your journey or already love exploring new cultures, the MFL Corner is here to inspire, challenge, and entertain you.

In each edition, you'll discover something for everyone: a fun fact to spark your curiosity, an interesting word or expression to expand your vocabulary, and a playful challenge to try at home. With sections devoted to Spanish, German, and French, you'll have the chance to experience all three languages in a fresh and engaging way.

But this isn't just for students — we warmly invite parents and families to join in too! Why not learn a new word together, try out the challenge as a team, or test each other on the fun facts? Language learning is not only useful, but also creative, interactive, and, most importantly, fun.

So dive in, give it a go, and discover how languages can open doors to new ideas, cultures, and experiences. Enjoy the MFL Corner!

The MFL team

Week 13/04/26	Weekly Word	Fun Fact	Challenge
	<p><b>Donner sa langue au chat</b></p> <p>Literal translation, giving your tongue to the cat.</p> <p>Je donne ma langue au chat.</p> <p>It indicates that you have no idea, you give up.</p>	<p>All offices and factories close in August in France. Workers must take their holidays then and not at any other time.</p>	<p>Cook a French dish and send some pictures.</p>
	<p><b>Affentheater</b> - Monkey Theater</p> <p>Back in the 19th century, there were traveling shows where Monkeys would perform acrobatics or imitate humans. These wildly exaggerated comedy shows may have vanished into history, but the idiom remains, and is applied to outrageous behaviour.</p>	<p>German law states that Sundays are a day of rest and silence. Neighbours are expected to keep quiet, and all grocery and other retail stores are closed.</p>	<p>List four well-known buildings or monuments that can be found in German-speaking countries</p>
	<p><b>“Hacer el agosto”</b></p> <p>Literally “to make August”- it is an expression used when a business is really successful and makes a lot of money. The expression comes from the main source of income in Spain, tourism. August is the month where hotels, restaurants and bars make more money due to tourism.</p> <p>Esta tienda está haciendo el agosto</p> <p>This shop is making a lot of business.</p>	<p>Students must pass most of their subjects in order to continue to the next year. If they fail more than 2 subjects, students must retake the year.</p>	<p>Learn the happy birthday song in Spanish.</p>



*Monday  
20th April*

### LUNCHTIME ACTIVITIES:

**Library**  
**Careers Drop In Session**  
**Wellbeing Hub** - crochet, card games, colouring

### AFTER SCHOOL ACTIVITIES:

**Library** - After school - 3pm to 4pm  
**Coding Club** Room 3 - 3pm to 3:50pm- Miss Askin (First come basis only 20 spaces)  
**Art club** - 3:10pm to 4 pm in A4, Mr Cockerill, Ms Marin-Pache  
**Yr 11 Boost classes** - Maths & Dance 3pm  
**Yr 11 Boost classes** - Media Studies and Computing 3.45pm  
**Year 10 Drama booster** - DRI 3-4pm Mrs Kazim  
**Year 11 GCSE Media Studies Intervention**- RM 89 3:30-4:15  
**Year 13 Psychology Intervention** - S5 2-4pm Miss Tang

### LUNCHTIME ACTIVITIES:

**Library**  
**Careers Drop In Session**  
**Wellbeing Hub** - crochet, card games, colouring

### AFTER SCHOOL ACTIVITIES:

**Library** - After school - 3pm to 4pm  
**Duke of Edinburgh Award (Bronze and Silver) Support**  
- Careers Office 3pm to 4pm  
**Fitness Club** - Years 9-11 3 to 4pm - Fitness Suite - Mr Miller  
**Table Tennis** - Years 7-11 3 to 4.15pm - Gym - Mr Atu  
**KS4/5 Dance** DAI Miss Smith 3:15pm-4:30pm  
**KS3 Drama /summer concert club** 3 to 4pm DRI  
**KS5 Media Intervention**- RM 88 3:15-4:15  
**Yr 11 Boost classes** - English 3pm  
**Yr 11 Boost classes** - IMedia, Drama (S6), Computing and Music 3.45pm-4.30pm

*Tuesday  
21st April*

### LUNCHTIME ACTIVITIES:

**Yr 11 Boost classes** - Art and Digital Art  
**Poetry by Heart** - 1:30-2 - room 71 - Ms Wood  
**Library**  
**Wellbeing Hub** - crochet, card games, colouring - BOOK CLUB

### AFTER SCHOOL ACTIVITIES:

**Library** - After school - 3pm to 4pm  
**Yr 11 Boost classes** - Geography 3pm  
**Boys Football** - Years 11 - Field - 3 to 4.15pm - Mr Aourarh  
**Industrial Cadets** 3pm to 4pm

*Wednesday  
22nd April*

**TRIP: YR13 A level Biology Field Trip**

## LUNCHTIME ACTIVITIES:

**Careers Drop In Session** - including college application support  
**Library** - Silent Reading  
**Year 9 Drama Booster session** - 1.30pm in DRI with Mrs Goddard  
**Wellbeing Hub** - crochet, card games, colouring  
**Christian Club** - Room 23

## AFTER SCHOOL ACTIVITIES:

**Library** - After school - 3pm to 4pm  
**Fitness Club** - Years 9-11 3 to 4pm - Fitness Suite - Mr Miller  
**Guitar Club and KS3 Band** in M1 - 3.15-4.15pm - Mr White  
**Zine Club** - 3-4pm - room 71 - Ms Wood  
**Spanish and German Club for Years 7&8** - Miss Schebella & Miss Garcia  
**Yr 11 Boost classes** - Science 3pm

**TRIPS:** **YR13 A level Biology Field Trip**  
**KS4 and KS5 Art Trip**



## LUNCHTIME ACTIVITIES:

**Library**  
**Wellbeing Hub** - crochet, card games, colouring

## AFTER SCHOOL ACTIVITIES:

**Dance Club Year 7-9** - 3.15 to 4.15pm in DA1 - Miss Smith  
**Winchmore Tabletop Society** Room 88 3pm to 4:30pm  
- Miss Davis, Mr Pohl, Mr Menda, Miss Zamora and Mr Melling  
**Yr 11 Boost classes** - Yr 11 Boost classes - French, German, Spanish, GCSE PE, Geography and iMedia (3pm)  
**Yr 10 iMedia support** - 3pm

## WINCHMORE'S WOW! WORD OF THE WEEK

# Adaptability

Week beginning: 20th April



**Word Class** Noun

**Meaning** The quality of being able to adjust to new conditions, environments, or unexpected challenges. In an academic context, it refers to a student's ability to apply their knowledge to unfamiliar questions or to pivot their strategy when under pressure.

**Examples**

- In a rapidly evolving job market, **adaptability** is often valued more highly by employers than specific technical skills.
- Although the Biology paper featured a case study I hadn't seen before, my **adaptability** allowed me to apply the core principles of evolution to the new scenario.
- During the German speaking exam, the student demonstrated impressive **adaptability** by seamlessly pivoting her response when the examiner asked an unexpected follow-up question about the environment.

**Challenge** Wordle : <https://www.nytimes.com/games/wordle/index.html>  
Connections : <https://www.nytimes.com/games/connections>



## BASKETBALL LONDON YOUTH GAMES 2026

Represent Team Enfield!

### TRIALS

**Tuesday 21<sup>st</sup> April**

5:40pm - 6:40pm (Girls Trial)

6:40pm - 7:40pm (Boys Trial)

@ Southbury Leisure Centre

### WHO?

Year 11 and under  
(Oldest DOB 01/09/2009)

### TRAINING DATES

All successful athletes must be available to train on Tuesday evenings up until the Qualifiers and Final dates.



Scan the QR code to sign up!

### ELIGIBILITY CRITERIA

All athletes need to live or go to school in London Borough of Enfield.

### COMPETITION DATES

**Qualifiers:** Saturday 23<sup>rd</sup> May 2026 (Boys)  
Sunday 24<sup>th</sup> May 2026 (Girls)  
@ UEL Sportsdock

**Finals:** Sunday 5<sup>th</sup> July @ QEOP Copper Box Arena



0204 534 2691



[www.activeenfield.uk](http://www.activeenfield.uk)



[sport@enfield.gov.uk](mailto:sport@enfield.gov.uk)



## strengthening families strengthening communities

### Programme for Parents/Carers

**Strengthening Families, Strengthening Communities (SFSC)** is a 13-week inclusive evidence-based parenting programme for all parents and carers of children aged 0-18.

The programme will help parents/carers think about how their experiences, culture, upbringing, and family background have influenced their parenting style.

It will also help parents/carers answer some important parenting questions, such as:

- How do I build a better relationship with my child?
- How can I motivate my child to try their best at school?
- How do I encourage my teenager to make better decisions?
- How do I put boundaries in place with my child?
- How do I connect with the wider communities and services in my area?

**Who is it for?** All parents/carers

**How long?** 13 weeks - each week you attend a 3-hour session in person

**When?** Wednesdays, 15 April – 15 July 2026 (except 27 May) & Fridays, 17 Apr – 17 Jul 2026 (except 29 May)

**What time?** 9:45am – 12:45pm

**Where?** Wednesdays - Ponders End Family Hub, 141 South Street, EN3 4PX

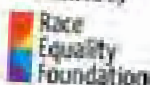
Fridays - Craig Park Family Hub, 2 Lawrence Road, N18 2HN

**Certificate Award Ceremony at end**

**How to Book?** [Strengthening Families, Strengthening Communities Programme](#) or scan QR code



Accredited by





## TENNIS LONDON YOUTH GAMES 2026

Represent Team Enfield!



### TRIALS

Friday 24<sup>th</sup> April and 8<sup>th</sup> May

6pm - 7pm

@ Enfield Chase Tennis Club  
Mortimer Drive, Enfield, EN1 2LH

All players to bring their own racket!

### WHO?

Junior Team: Aged 11-14  
(Oldest DOB: 01/09/2012 - Youngest DOB: 31/08/2015)

Senior Team: Aged 12-17  
(Oldest DOB: 01/09/2008 - Youngest DOB: 31/08/2014)

Scan the QR code to  
sign up!



### ELIGIBILITY CRITERIA

All athletes need to live or go to school in London Borough of Enfield.

On entry, players must have a World Tennis Number between 25-40.9 (junior) 20-40.9 (senior) or no World Tennis Number to be eligible for this competition.

### COMPETITION DATES

**Qualifiers:** Saturday 6<sup>th</sup> June @ Wimbledon Park  
**Finals:** Sunday 14<sup>th</sup> June @ Redbridge Sports Centre



0204 534 2691



[www.activeenfield.uk](http://www.activeenfield.uk)



[sport@enfield.gov.uk](mailto:sport@enfield.gov.uk)



## Trent Park

# Triffic Trail

### Sunday 21st June 2026

#### Trent Park, London

- 10km Trail Race (16 years old and over)
- 4.5km Junior Race (12 to 15 years old)
- 2km Junior Fun Run (under 12s)

Set within the scenic grounds of Trent Park, the course offers a variety of terrain, including tarmac road, trails, woods, open fields, and a few hills to keep things interesting.

Scan the QR code or visit [www.triffictrail.com](http://www.triffictrail.com) to enter



Charities we  
are proudly  
supporting:

**North  
London  
Hospice**

**THE  
NIGHTINGALE**  
Cancer Support Centre

**WILDLIFE RESCUE &  
AMBULANCE SERVICE**  
ENFIELD



Cockfosters, Piccadilly Line



Park entrance on Cockfosters Road, A111



what3words: drama.hours.wages



# WINCHMORE WEEKLY



ENFIELD  
Council



## NETBALL

### LONDON YOUTH GAMES 2026

Represent Team Enfield!

#### TRIALS

Thursday 23<sup>rd</sup> April

7pm - 9pm (Girls Team)

@ Broomfield Park, Palmers Green  
(Netball Court 9)

All players must bring a match ball!

#### WHO?

Year 7-9 (Under aged 14)

(Oldest DOB: 01/09/2011 - Youngest DOB: 31/08/2014)

#### TRAINING DATES

All successful athletes must be available to train on Thursday evenings at Broomfield Park up until the finals date.



Scan the QR code to sign up!

#### ELIGIBILITY CRITERIA

All athletes need to live or go to school in London Borough of Enfield.

#### COMPETITION DATES

Qualifier: Saturday 13<sup>th</sup> June @ Redbridge Sports Centre

Finals: Sunday 5<sup>th</sup> July @ QEOP Copper Box Arena



0204 534 2691



[www.activeenfield.uk](http://www.activeenfield.uk)



[sport@enfield.gov.uk](mailto:sport@enfield.gov.uk)